

Collection Brochure

m i s t

REPUBLIC OF
BY
IV

+

ShawContract®
hospitality



komorebi (n.)

木漏れ日

pronunciation | “kO•mO•’re•bE

sunlight that filters through
the leaves of trees

They say that some of the most beautiful words in the world cannot be translated.

The Mist collection is inspired by one such word — *komorebi*, the Japanese word that refers to the effect of dappled sunlight as it filters through the trees. We are naturally drawn to light-filled spaces, eager to catch the fleeting rays of a sunrise or sunset, compelled to seek out the horizon through the parting of the trees or the clouds.



“Ordinary is not in our vocabulary.”

Designed in collaboration with REPUBLIC OF II BY IV — an award-winning, multi-disciplinary studio specializing in international luxury lifestyles and architectural interiors, their work is rooted in design for purpose and guided by a passion for constant innovation. Their core values are driven by the statement ‘Ordinary is not in our vocabulary,’ and the Mist collection is proof of that.

Guided by a design philosophy that is client-focused, they are known for creating interiors with longevity that surpasses trend. Each project is unique with its own distinctive story.



Together, the Shaw Contract and REPUBLIC OF II BY IV teams created a collection with an atmosphere of quiet discovery, a sophisticated mystique that enhances the space around it.



Patterns reveal themselves in slow, reflective waves.

Mist's patterns reveal themselves in slow reflective waves, a meandering of light and shadow and delicately drawn lines. Thoughtful brushstrokes act as windows of light into the layers of each design, unveiling a unique textile beauty. Every pattern has continuous threads that are perfectly engineered to make the carpet appear as if it were a watercolor painting, a re-imagining of the floor as a work of art.

Each piece in the collection is produced using Canvas dye-injection technology in a process that allows multiple ink colors to be applied simultaneously. The collection is offered in a total of 18 patterns with an unlimited selection of customizable colorway options.



Mist transforms the experience of space in subtle, nuanced ways bringing moments of calm to busy entrance ways, elevating hallways with elegant, understated luxury and providing statement rugs that capture the imagination with a translucent beauty.

VR61253
12 ft × 18 ft 3.66 m × 5.49 m



VN61254
6 ft × 10 ft 1.83 m × 3.05 m





VR61246

REFINED ENGINEERED
HARDWOOD IN GALLANT OAK



VR61246

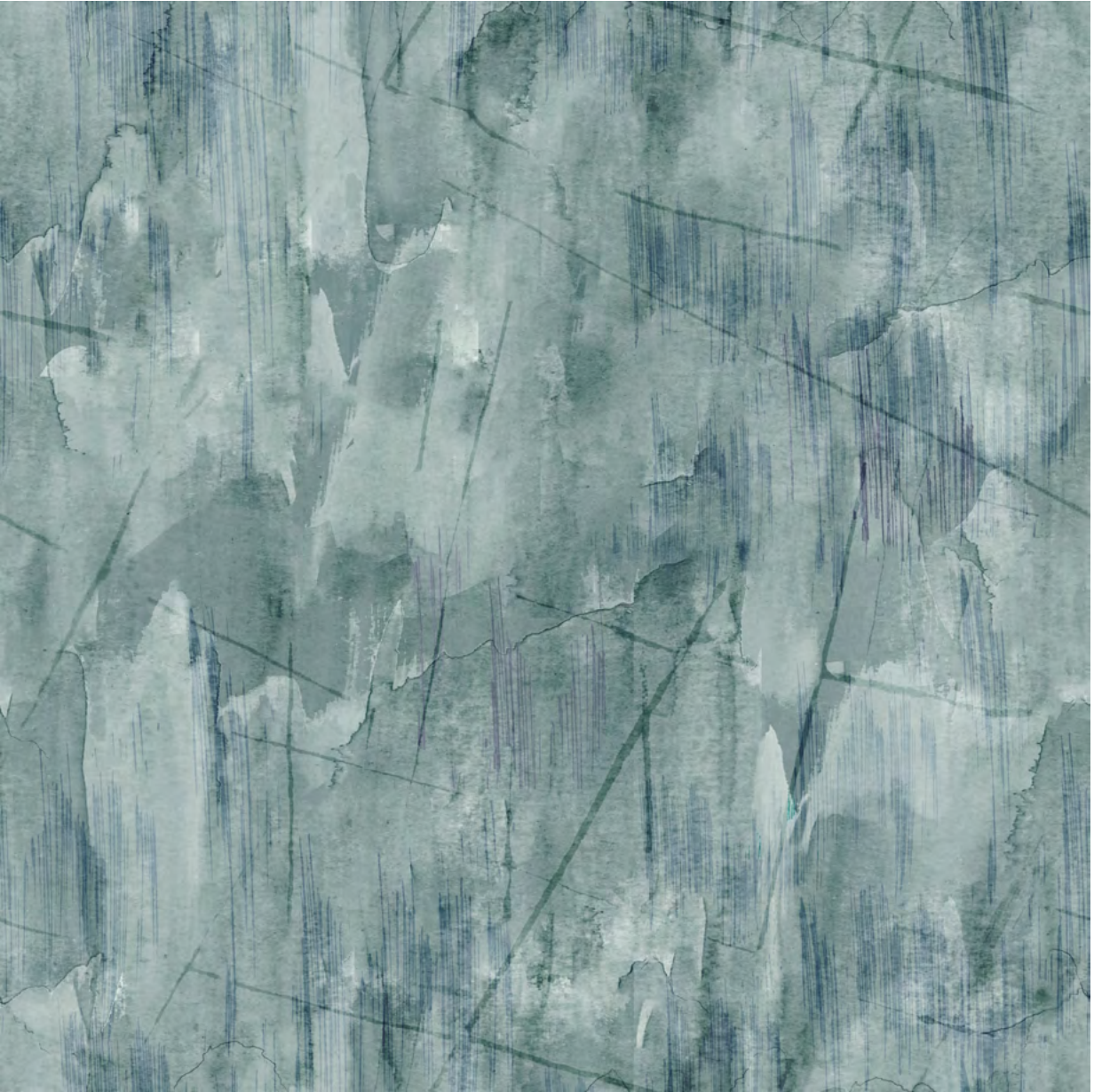
12 ft x 18 ft 3.66 m x 5.49 m



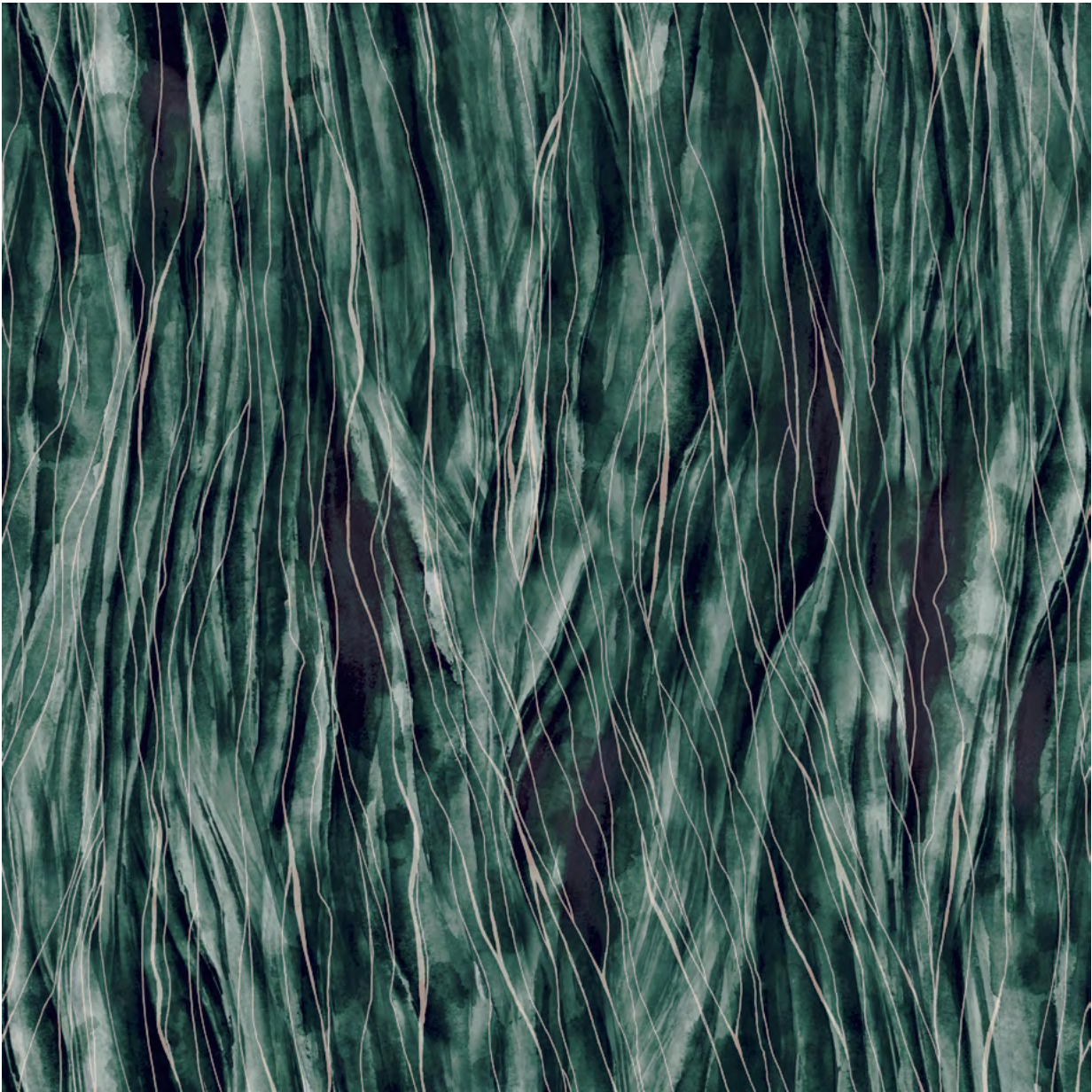
VN61248
6 ft × 10 ft 1.83 m × 3.05 m



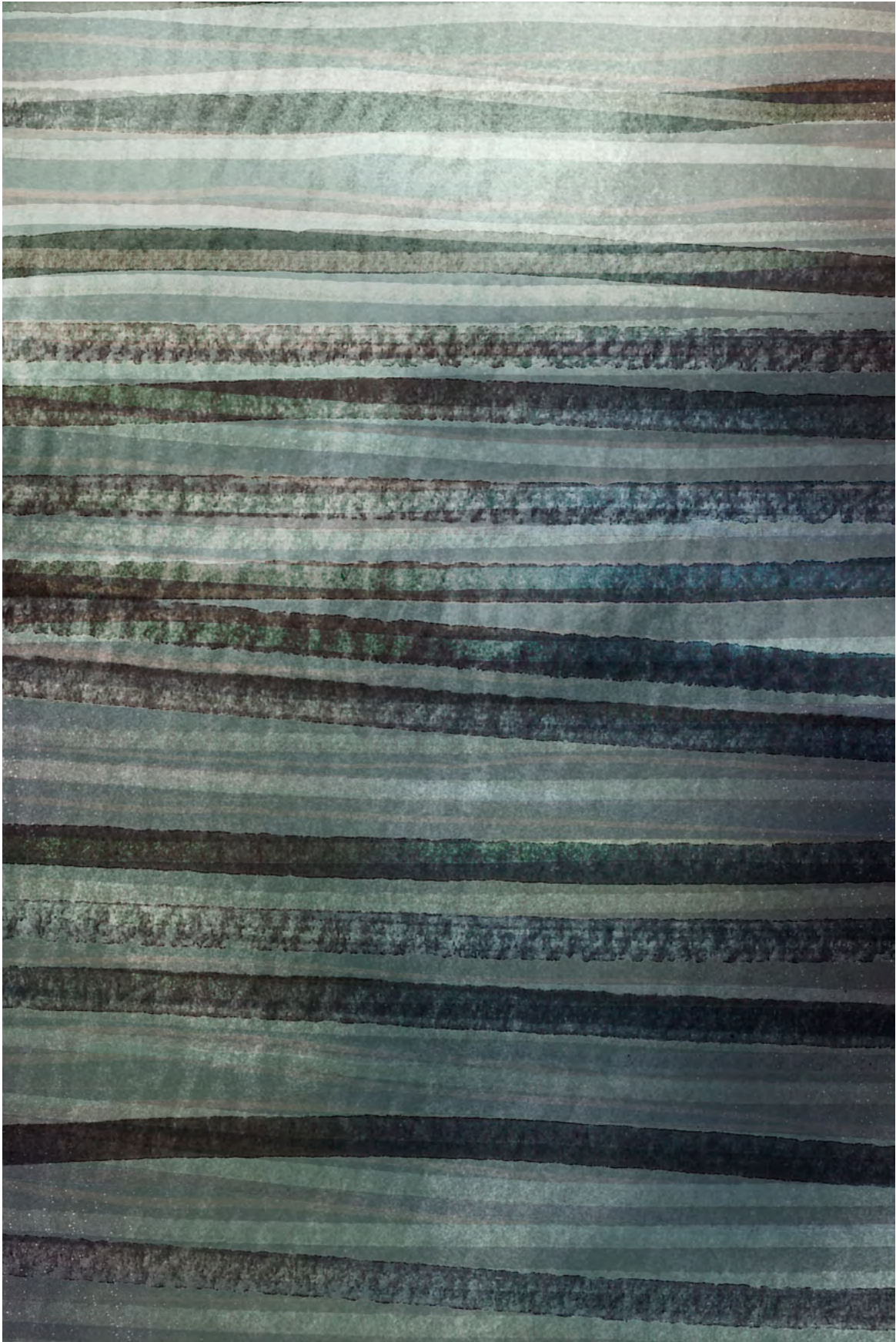
VF61249
6 ft × 6 ft 1.83 m × 1.83 m



VF61255
6 ft × 6 ft 1.83 m × 1.83 m

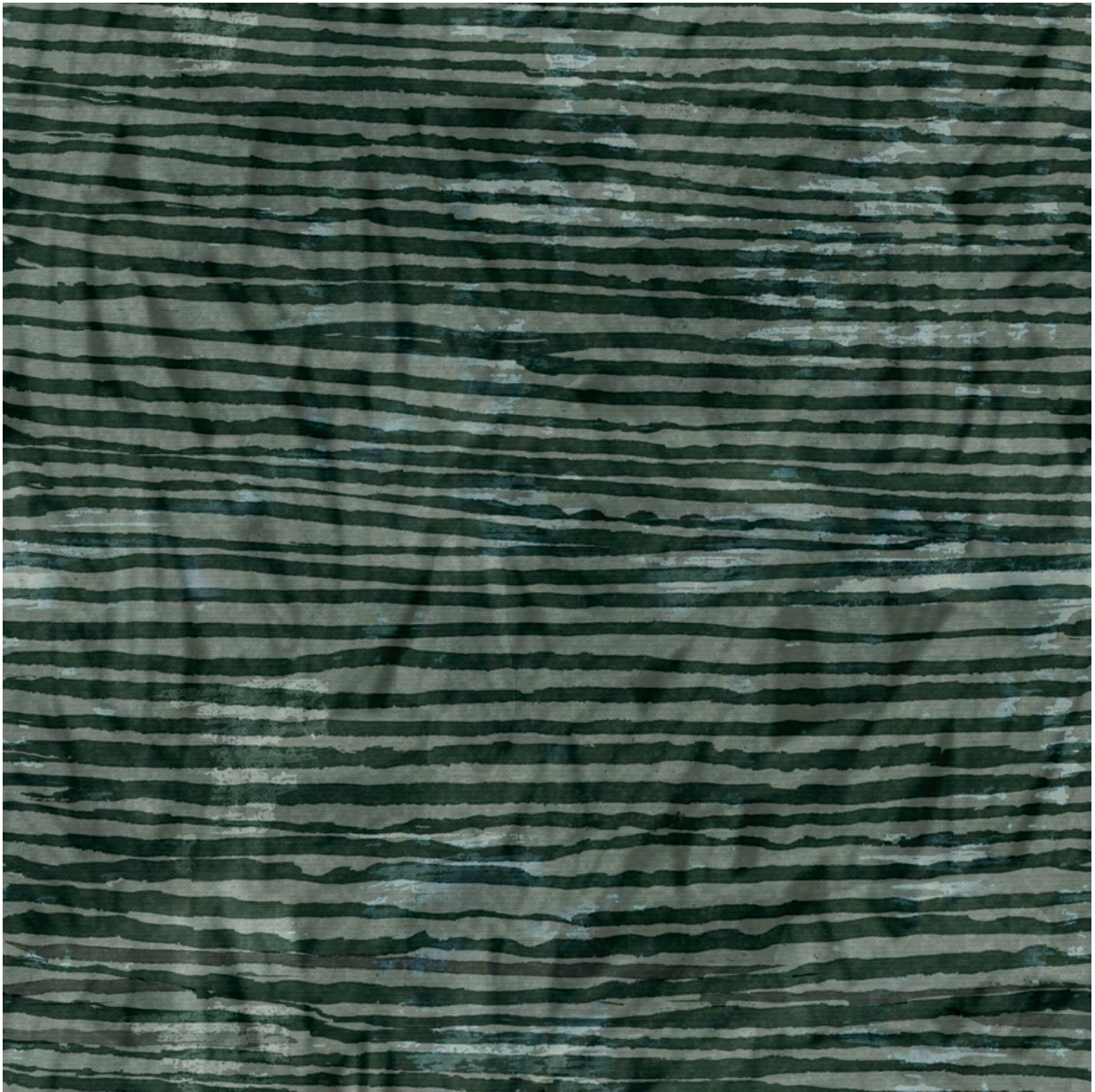


VR61250
12 ft × 18 ft 3.66 m × 5.49 m

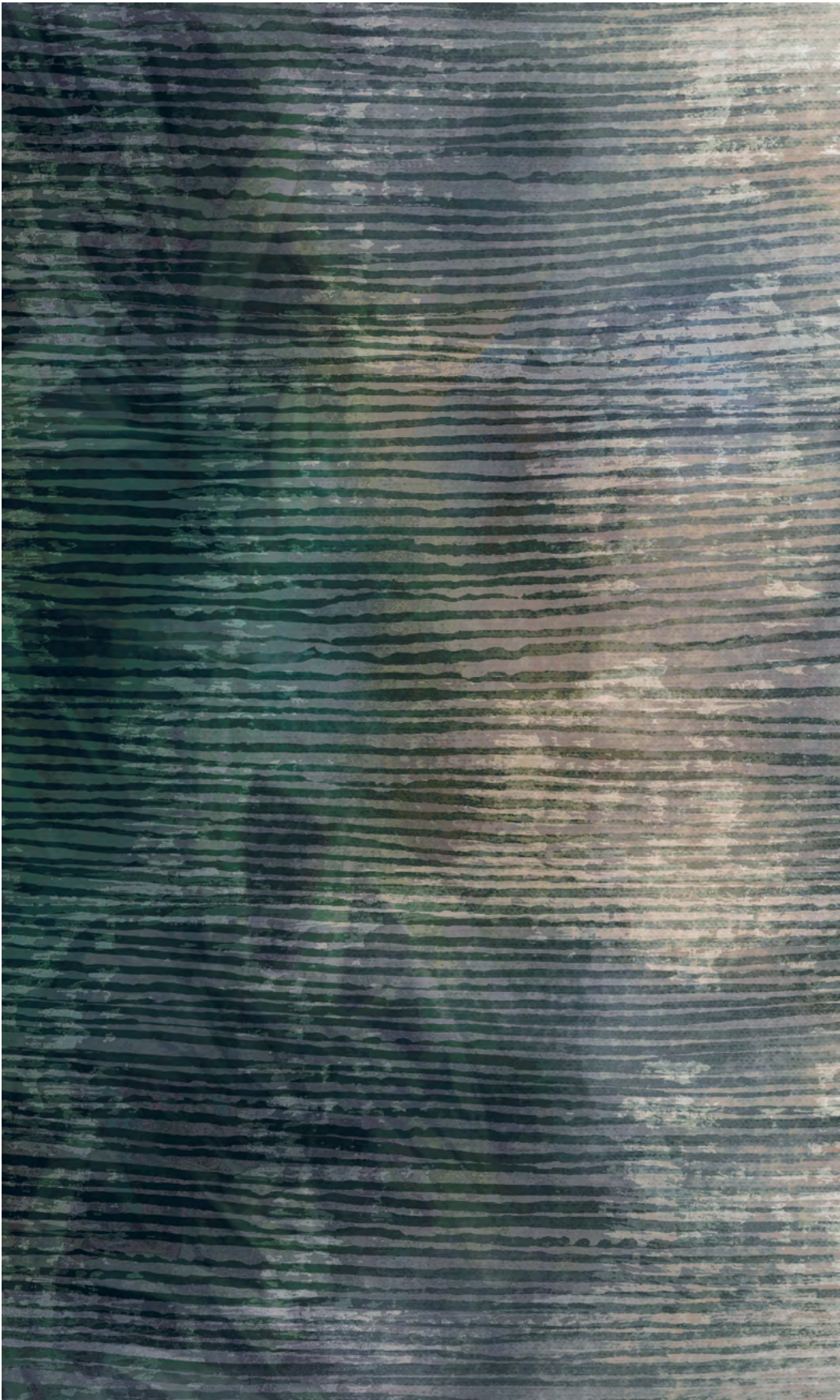




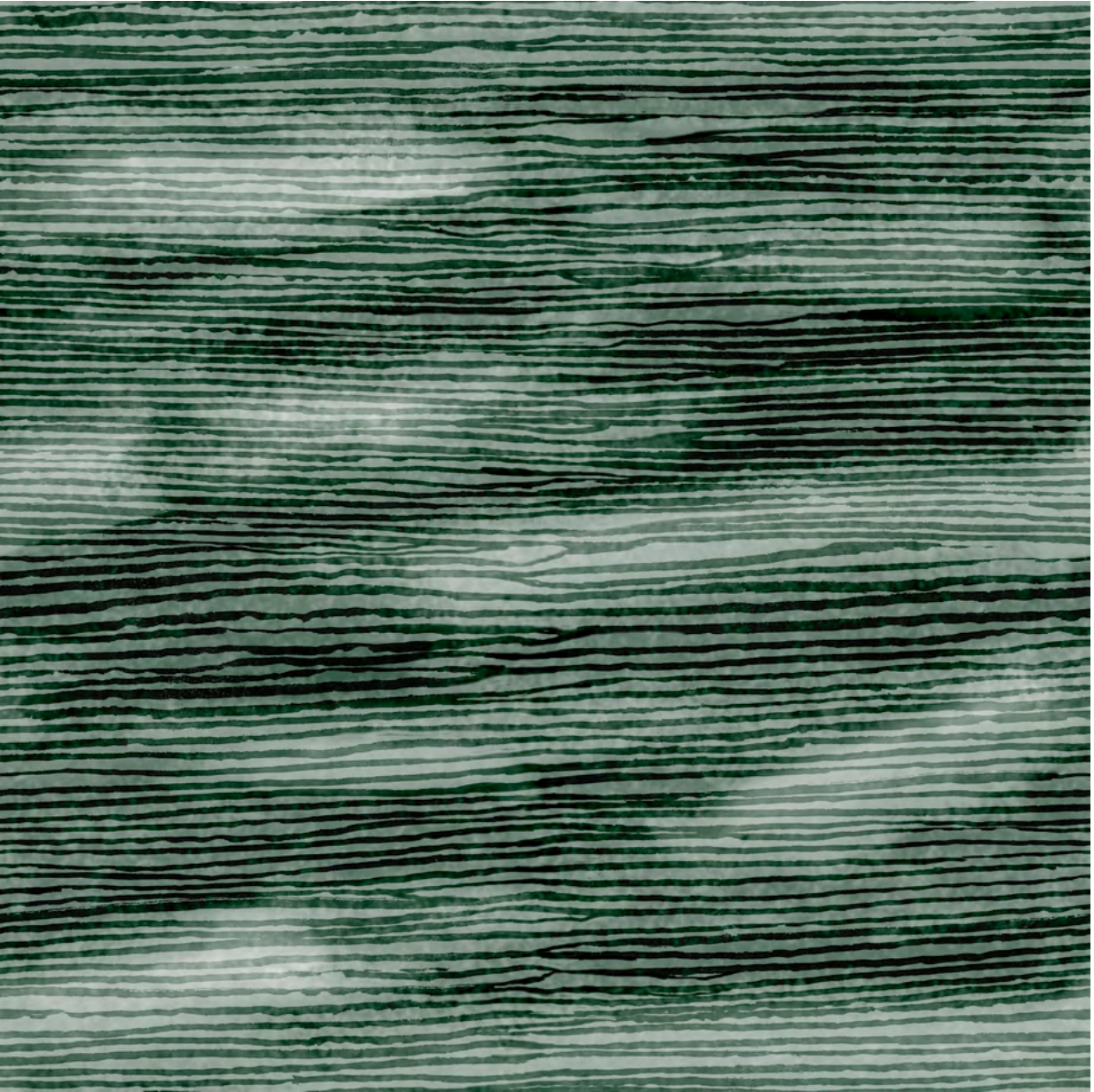
VF61252
6 ft × 6 ft 1.83 m × 1.83 m



VN61251
6 ft ×10 ft 1.83 m × 3.05 m



VF61264
6 ft × 6 ft 1.83 m × 1.83 m





VR61262
12 ft × 18 ft 3.66 m × 5.49 m



VN61263
6 ft × 10 ft 1.83 m × 3.05 m





“All the beauty of life is made up
of light and shadow.”

Tolstoy

Art and Nature

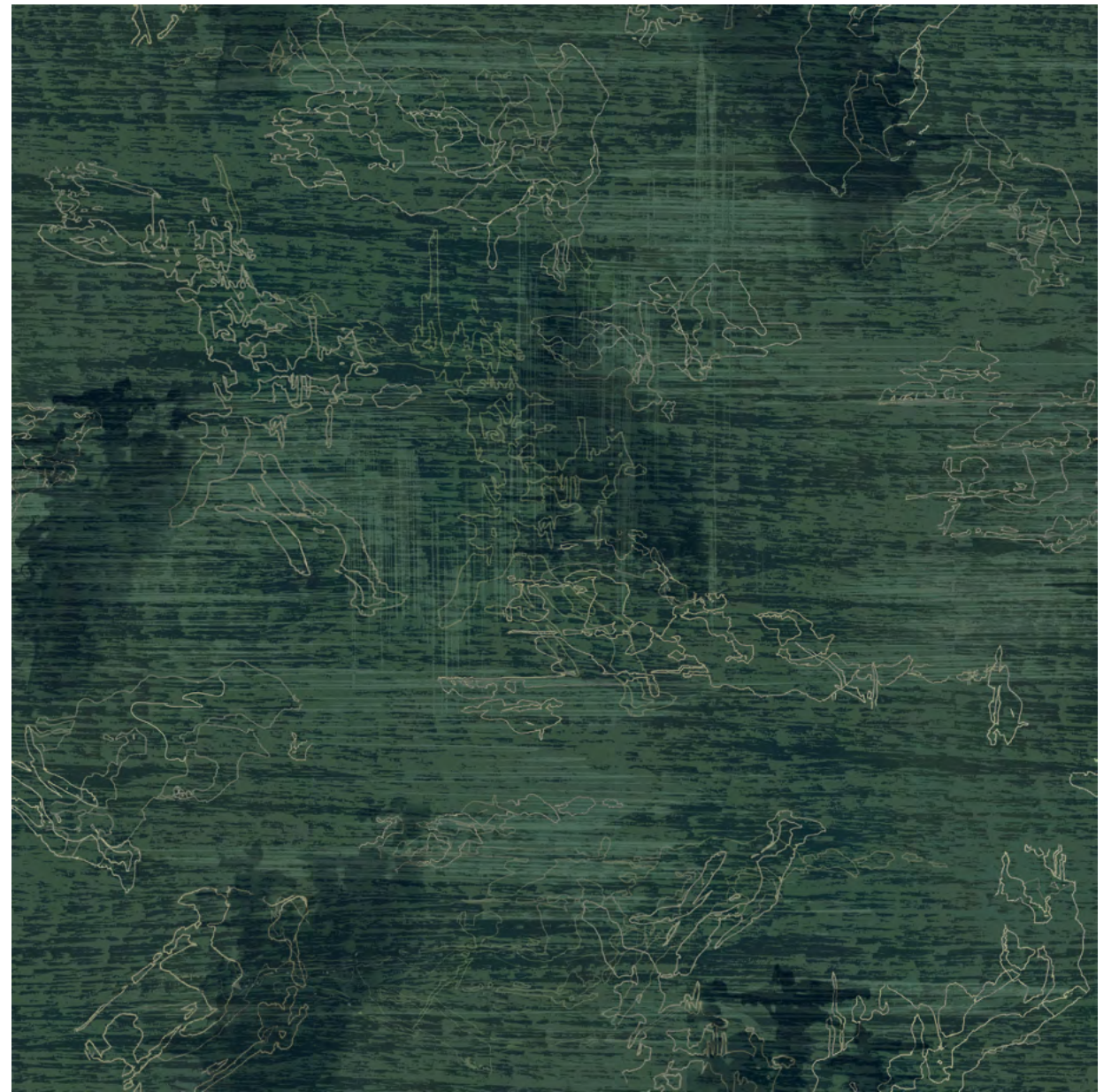
It's that delicate balance and unveiling that compel us to linger, to take stock, to be present.

Mist provides an experience of art and nature that resists articulation, a subtle echo of emotions that is fleeting, an understated luxury that encourages us to seek out meaningful moments that expand our own horizons.

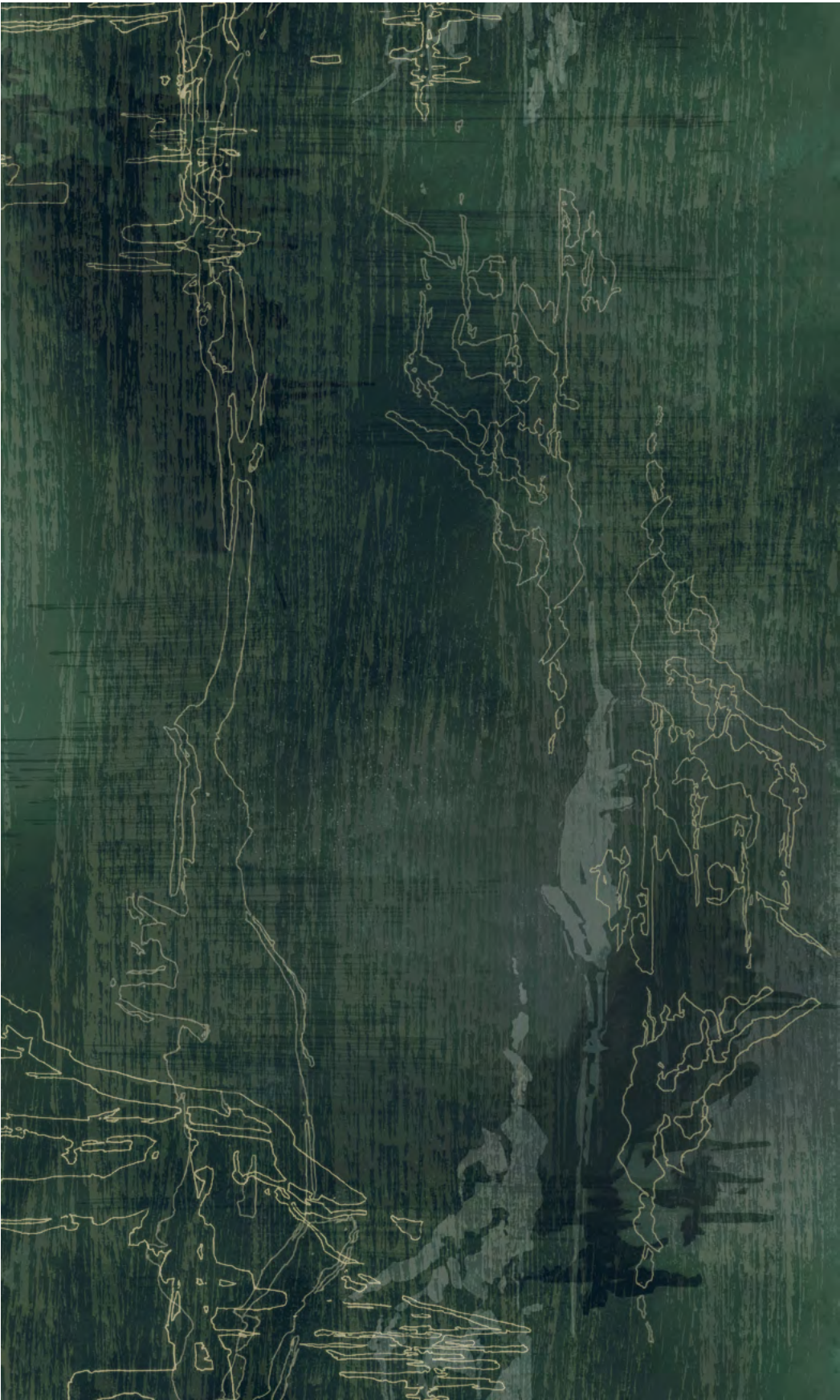
Mist captures the ethereal transience of dawn and dusk in a delicate, painterly collection designed to evoke a transient mood, an encounter with nature that leaves you filled with optimism, calm, yet poised for new adventures.



VF61258
6 ft × 6 ft 1.83 m × 1.83 m

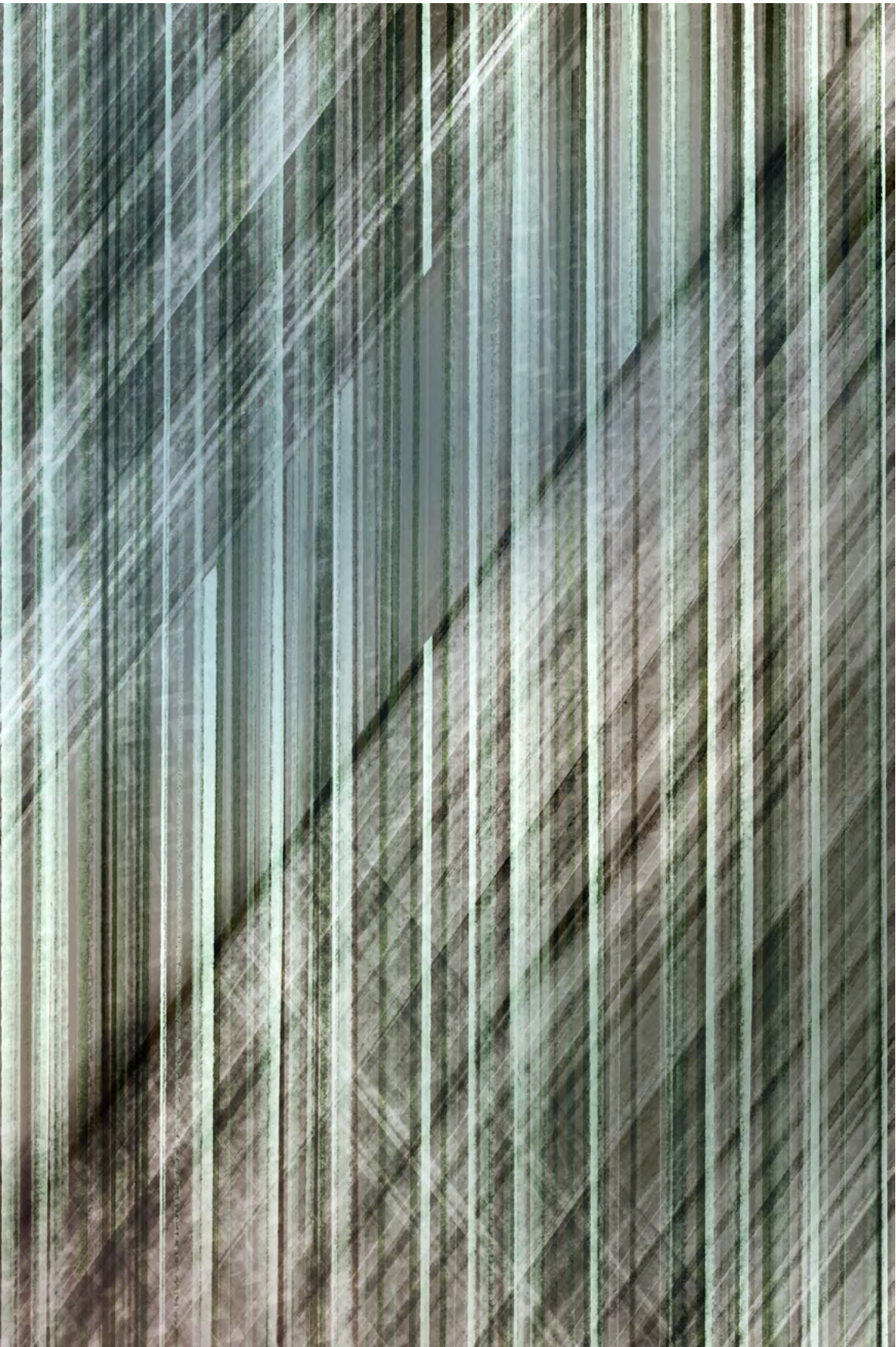


VN61257
6 ft × 10 ft 1.83 m × 3.05 m



VR61256
12 ft × 18 ft 3.66 m × 5.49 m

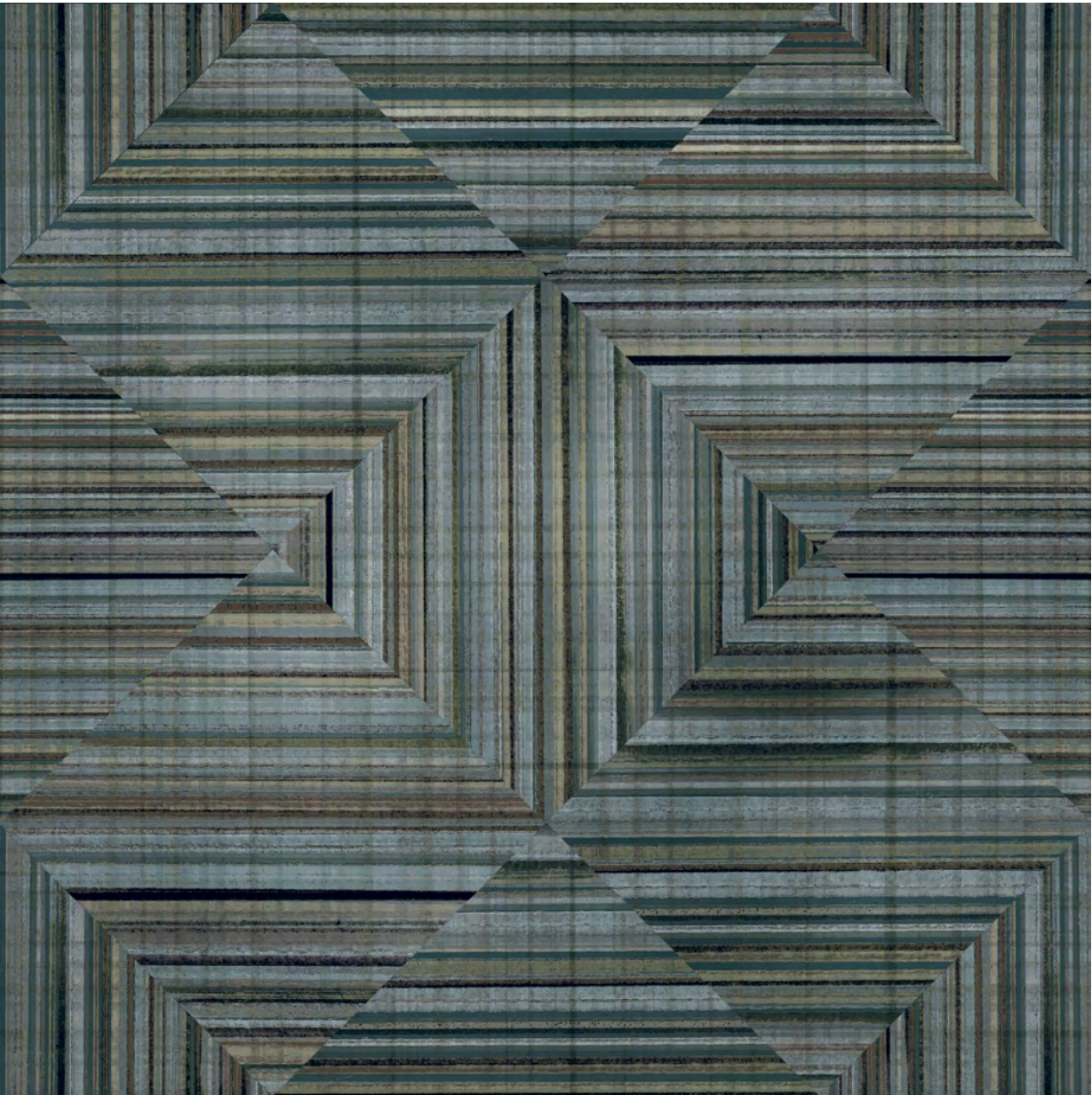




VN61260
6 ft × 10 ft 1.83 m × 3.05 m

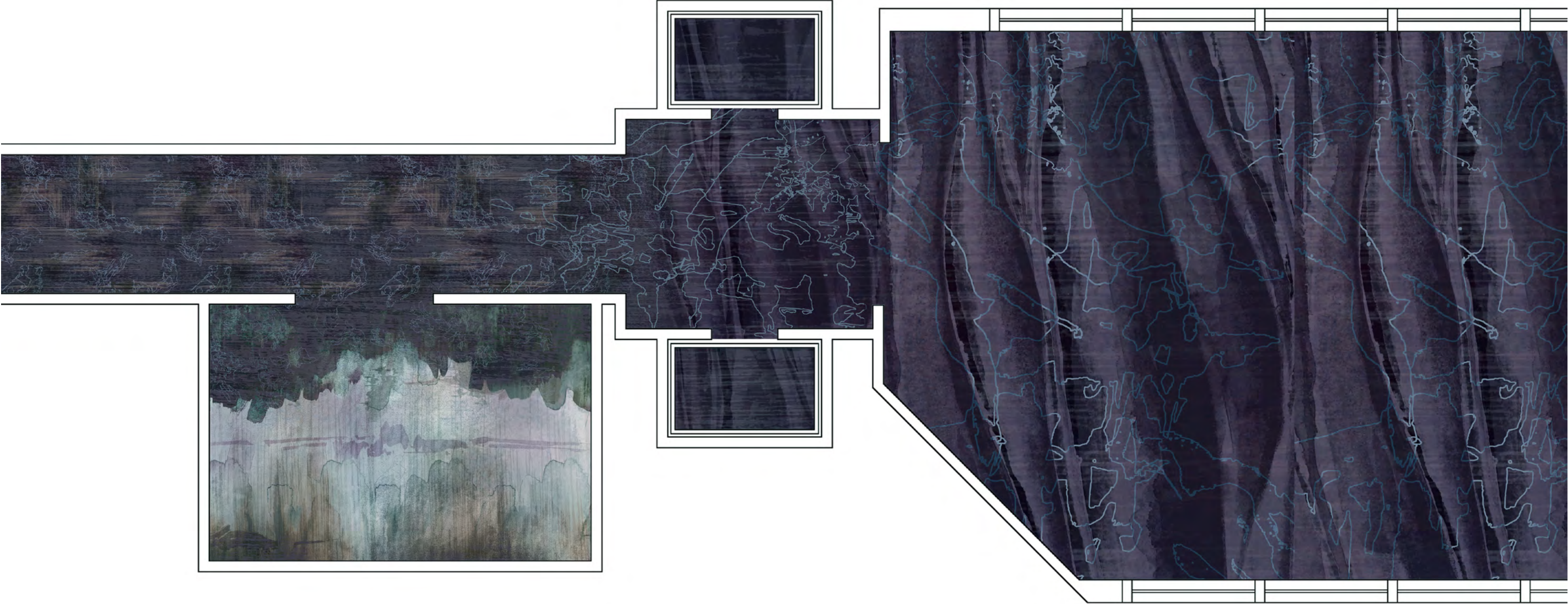


VF61261
6 ft × 6 ft 1.83 m × 1.83 m



“Every space we design for is unique. Clients will be inspired by Mist’s ethereal, organic designs while creating dynamic custom spaces.”

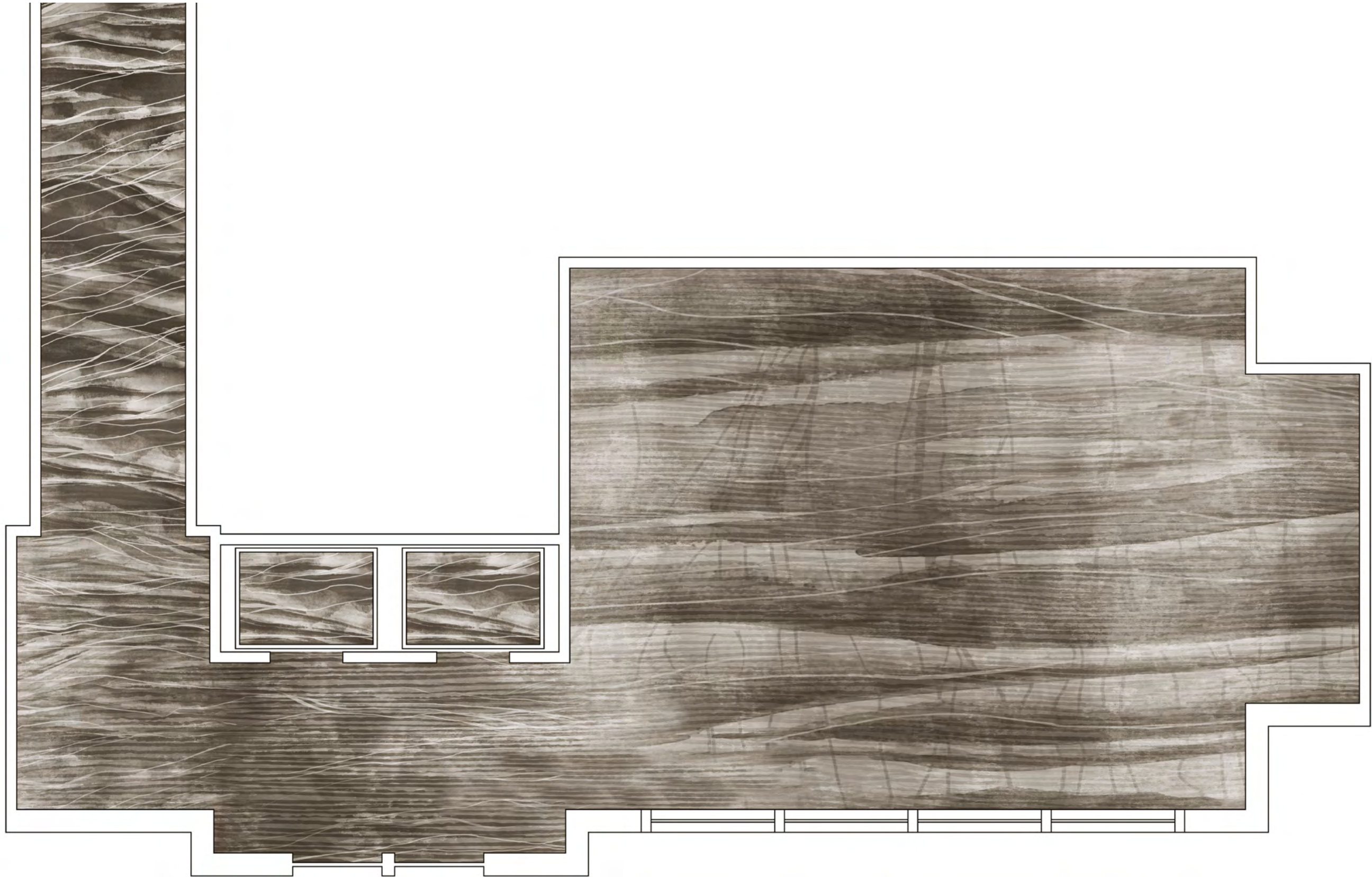
Omoleye Simmons
Senior Designer, Lifestyle Studio



VF61258
CORRIDOR

VN61248
PRE-FUNCTION

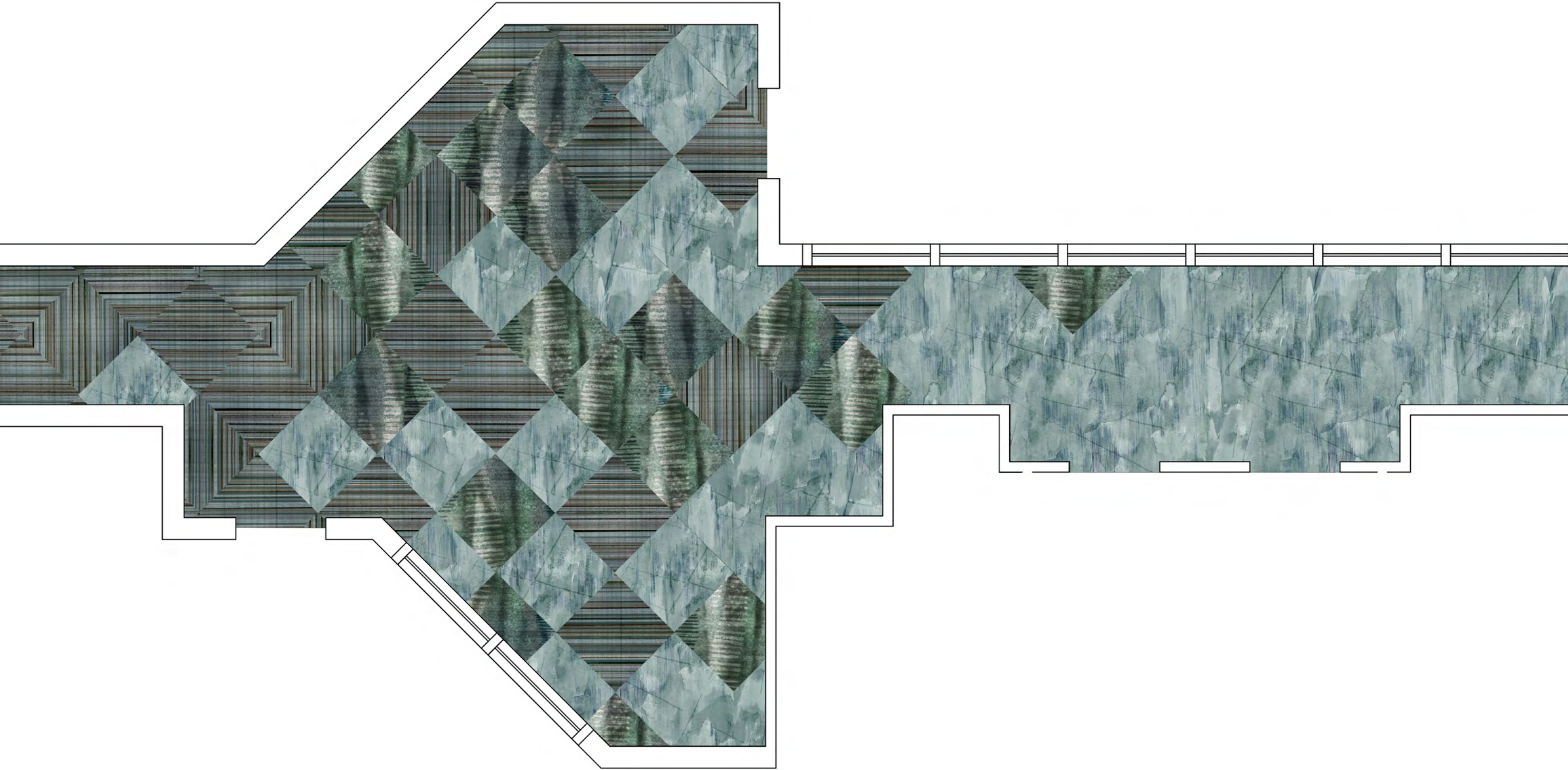
VR61256
ELEVATOR
ELEVATOR LOBBY
FUNCTION



VN61254
CORRIDOR
ELEVATOR

VN61254 & VN61251
ELEVATOR LOBBY

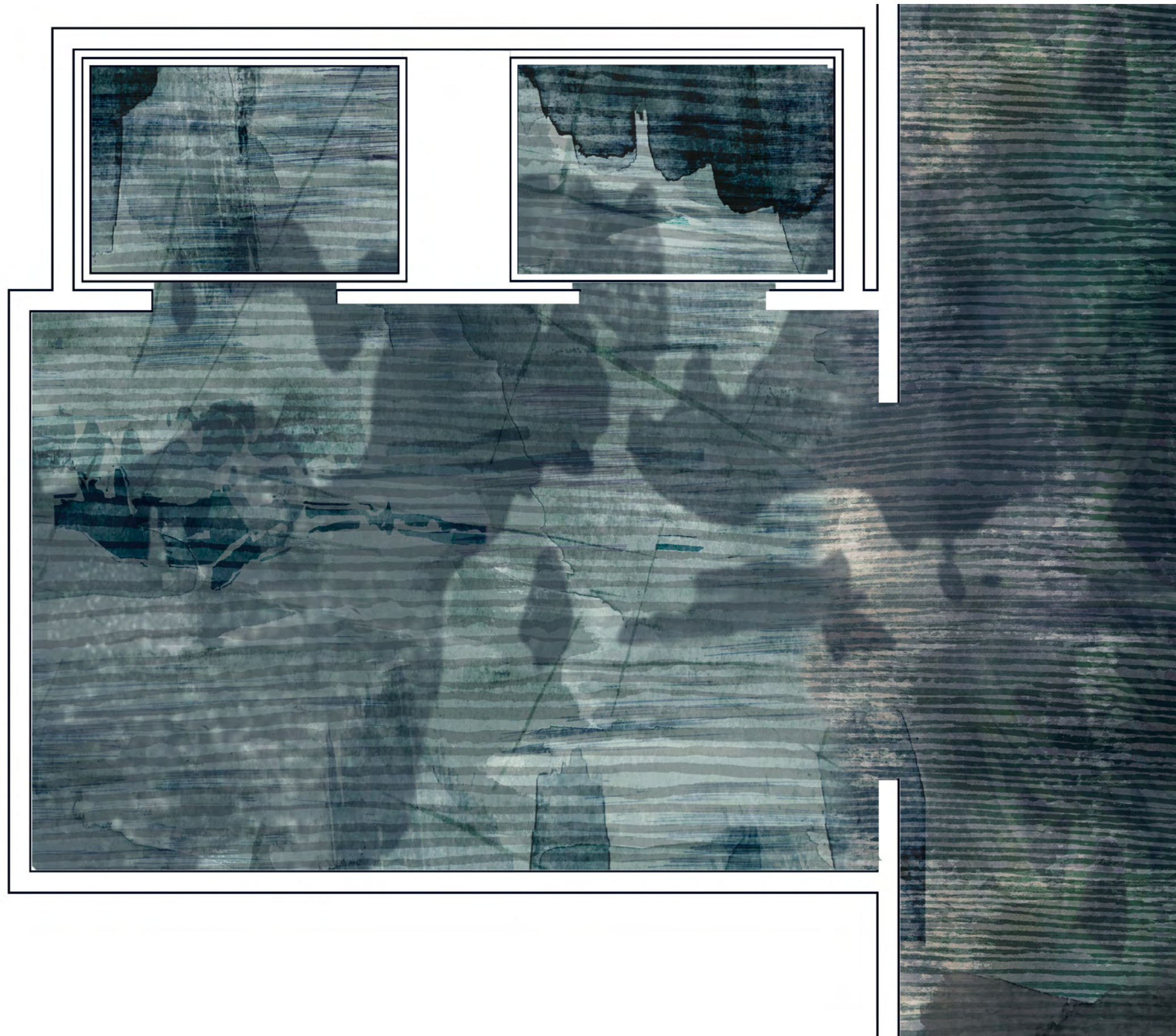
VN61254 & VN61251
FUNCTION



VF61261

VN61263

VF61249



VR61246 & VF61249 & VF61252
ELEVATOR
ELEVATOR LOBBY

VN61251 & VR61246
CORRIDOR



+

ShawContract®
hospitality